

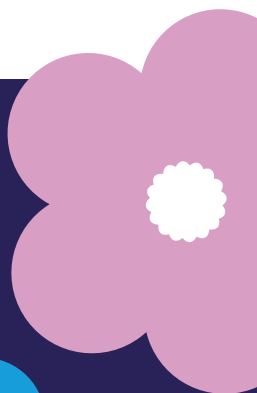
Mesothelioma and Travel



MESOTHELIOMA UK

www.mesothelioma.uk.com

0800 169 2409



Contents

Clinical trials and hospital appointments

Patient travel grant	1
Healthcare Travel Costs Scheme (HTCS)	1

Help with vehicle and travel costs

Vehicle tax	3
Motability scheme	3
Road toll concessions	4
Disabled Persons Railcard	4
Disabled Persons Bus Pass / Concessionary Travel Pass	5
Dial-A-Ride / Taxicard	5

Travel - home and abroad

Travel insurance	6
Accessible travel:	7
Air travel	7
Rail	7
Sea	8

Discounts on days out	8
-----------------------	---

Introduction

Having a diagnosis of mesothelioma can make travel more complicated. This leaflet outlines what you need to think about and the help available to you - whether you are travelling within the UK or planning a trip abroad.

Clinical trials and hospital appointments

Patient Travel Grant

If you are participating in a clinical trial outside your local area, Mesothelioma UK has a patient travel grant that you can apply for to help with travel costs.

You can claim for;

- One visit to seek a specialist/second opinion out of area
- Accessing a clinical trial which is not in your local area

Please call our Support Line on 0800 169 2409 to find out more.

Healthcare Travel Costs Scheme (HTCS)

You may be able to get help with your hospital travel costs or free travel depending on your circumstances.

The Healthcare Travel Costs Scheme (HTCS) provides financial support with the cost of attending hospital appointments.

You must be receiving means-tested benefits or have a defined low income to qualify for help. You can use the checker at the website below to see if you qualify.



<https://services.nhsbsa.nhs.uk/check-for-help-paying-nhs-costs/start>

If you have mobility difficulties or you would require additional support while travelling to hospital you may be eligible for non-emergency patient transport services (PTS). PTS may not be available in all areas, please speak to your healthcare professional for advice on accessing the service.

In some areas charities offer free transport to and from hospital for cancer patients. Please ask your healthcare professional or local mesothelioma/asbestos support group for further advice.

Help with vehicle and travel costs

There are various exemptions, discounts and concessions available to help with vehicle and travel costs. Most of these exemptions are linked to either the disability benefit you receive or your entitlement to a Blue Badge. If you need advice on obtaining a disability benefit or Blue Badge, please refer to our

Mesothelioma & Benefits leaflet.

Disability/Ill Health Benefits

- Attendance Allowance (AA)
- Personal Independence Payment (PIP)
- Disability Living Allowance (DLA)
- Adult Disability Payment* (ADP)

*Scotland only

reduction in vehicle tax if you receive the standard mobility rate of PIP or ADP.

The vehicle must be registered in the disabled person's name or their nominated driver's name. If you're claiming vehicle tax exemption for a vehicle for the first time you must claim at a Post Office.



[www.gov.uk/
financial-help-
disabled](http://www.gov.uk/financial-help-disabled)

Vehicle Tax

You can get an exemption from paying vehicle tax if you receive the highest mobility rate of DLA, PIP or ADP. You can get a 50%

Motability Scheme

The Motability Scheme allows you to exchange your qualifying mobility benefit for a brand-new car, wheelchair accessible

vehicle or powered wheelchair.

It's an all-inclusive package that includes insurance cover, breakdown cover, servicing and MOT. Qualifying benefits are the highest mobility rate of DLA, PIP and ADP.



www.motability.co.uk

Road Toll Concessions

Concessions for Blue Badge holders are available on most river crossings, bridges and tunnels that charge a toll. In most cases you must apply in advance to get the concession.



www.gov.uk/toll-concessions

Disabled Persons Railcard

A Disabled Persons Railcard gets you 1/3 off most train travel for yourself and an accompanying adult. It costs £20 for one year or £54 for three years. You can apply online or via post. Qualifying benefits are any rate of AA, PIP or ADP plus most rates of DLA except low rate care.



www.disabledpersons-railcard.co.uk

Disabled Persons Bus Pass / Concessionary Travel Pass

Local authorities are responsible for issuing concessionary travel passes which allow eligible people to travel free or discounted on off peak services. Check your local council website for details of how to apply.



www.gov.uk/find-local-council

Dial-A-Ride / Taxicard

Dial-A-Ride and Taxicard schemes provide subsidised transport for people who have serious mobility problems and difficulty using public

transport. They offer door to door minibus or taxi services at reduced prices. Check your local council website to see if there is a scheme in your area.



www.gov.uk/find-local-council

Travel – home and abroad

We recommended speaking to your doctor or specialist nurse for advice before making any travel plans. They understand the positive effects of travelling and will help you prepare for a safe and enjoyable trip.

Travel Insurance

Medical treatment abroad can be very expensive so travel insurance with appropriate medical cover is essential. You will usually have to pay extra to cover pre-existing medical conditions, including mesothelioma.

We cannot recommend any travel insurance providers but it's a good idea to compare quotes from providers that specialise in cover for people with medical conditions.

Alternatively, you can find a qualified and regulated insurance broker via the British Insurance Brokers' Association (BIBA).

A broker may charge a fee or commission, but you'll only have to provide your details once and they will do the shopping around on your behalf.



[www.biba.org.uk/
find-insurance](http://www.biba.org.uk/find-insurance)

Travel insurance also covers the costs of cancelling, delaying or cutting short a trip. It is important that anyone travelling with you, who would not want to continue with the trip if you were unable to come, is either covered on your policy or has informed their own travel insurance provider of your health condition.

Accessible Travel

If you need assistance while travelling it is important to contact the travel companies in advance to discuss your requirements or assistance may not be guaranteed.

A helpful checklist for disabled and less mobile passengers is available from the ABTA website. All assistance must be provided free of charge.



[www.abta.com/
accessible-travel](http://www.abta.com/accessible-travel)

Air Travel

Airlines and airports have special assistance teams who can arrange

any assistance you may need such as moving through the airport, taking mobility equipment with you and help boarding and disembarking the plane. Make sure you let the airline and airport know at least 48 hours before you fly.

Rail

Most trains are accessible for people with disabilities, but we recommend checking with the train company prior to travel if you need to book assistance to board and disembark the train.

UK National Rail run a Passenger Assist scheme and you can book help at any station for any journey by calling 0800 022 3720

at least 24 hours in advance of travel.

Sea

Most modern cruise ships and ferries have disabled access facilities and cabins. They must also carry any medical and mobility equipment you need at no extra charge and arrange any assistance you may need to embark and disembark the ship.

Contact the travel company in advance to discuss your requirements.

Discounts on days out

Many attractions and activities such as cinemas, theatres, galleries, events, concerts, historic buildings and gardens, theme parks and zoos offer discounts, special access and “carers go free” offers. Check on the attraction's website prior to travel or ask when you arrive if there are any discounts or concessions.

Each venue will say what proof they need. Usually a Blue Badge or a disability benefit letter will be sufficient.

Mesothelioma UK

provides specialist,
impartial, up to
date support and
information.



To sponsor or donate contact: Mesothelioma UK

CIO Registered Charity Number 1177039

Email | info@mesothelioma.uk.com

Freephone | 0800 169 2409

Website | www.mesothelioma.uk.com

Published: Sept 2023 | Review due: Aug 2025 | MED-23-01

Download information from
www.mesothelioma.uk.com

To request a copy, [freephone 0800 169 2409](tel:08001692409)
or [email info@mesothelioma.uk.com](mailto:info@mesothelioma.uk.com)