

Mesothelioma Care Record

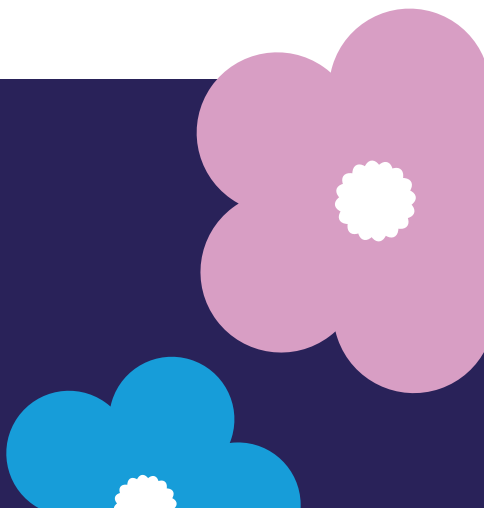
Helping you keep track of your
care and treatment



MESOTHELIOMA UK

www.mesothelioma.uk.com

0800 169 2409



Mesothelioma Care Record

Patient details / NHS sticker

Useful contacts

Contents

How to use this booklet	p.1
Who we are	p.3
Your medical details	p.4
Your treatment to date	p.5
Your care plan	p.8
Notes	p.17

How to use this booklet

Welcome to your Mesothelioma Care Record. It can help you keep track of everything relating to your care and treatment. It is normal to feel overwhelmed – this booklet can help you make sense of it all.

Try and bring it to all your appointments whether at home, community clinic or hospital. It can be a great way to record information and support conversations with your healthcare team.

Use the latter sections to summarise recent appointments and

consultations, including what the next steps are. You may want to ask your nurse or health care professional to do this bit for you.

There is also a notes section at the end for additional questions, information, or to summarise upcoming appointments.

If you need more pages, you can print them off from:

www.mesothelioma.uk.com/mesothelioma-care-record

If you have been given the Mesothelioma UK plastic wallet alongside this booklet you can use it to store other documents such as patient information booklets, clinic letters, current prescriptions, scans and reports. For ease of use, we suggest you store the most recent documents on top.

If you do not have the plastic wallet and would like one, please email us at info@mesothelioma.uk.com or call 0800 169 2409 to request a copy.

Additional Resources

Access our full range of patient information booklets from:

www.mesothelioma.uk.com/downloadable-resources

The Health Companion app can help you monitor changes in your health and wellbeing. Find out more here:

www.mesothelioma.uk.com/your-health-companion

Who we are

We are Mesothelioma UK, the national charity for mesothelioma, a cancer of the mesothelium, a thin lining covering some of the body's internal organs and cavities. It most commonly affects the lungs. It is usually caused by asbestos exposure.

We know that receiving a diagnosis of mesothelioma can be overwhelming. It can be difficult to know who to talk to and what to do next.

We fund a team of Clinical Nurse Specialists (CNSs) who can guide and support you throughout your mesothelioma

journey, helping you make treatment decisions, manage your symptoms, and live better with mesothelioma.

There may not be a CNS in your hospital, but there may be one in your region. Call our support line on **0800 169 2409** to find out. Even if there is not one close by, the support line team can provide information and signpost further support. We also offer a call back service from a CNS who will be able to talk to you about any aspect of your mesothelioma.

Your medical details

Your healthcare professional can help you complete this page

Diagnosis

Date of diagnosis

Site

Subtype

Allergies

Any other health conditions

Your treatment to date

Your treatment to date

Your treatment to date

Your care plan

When

Who

Where

Summary/Next Steps

Questions

Your care plan

When

Who

Where

Summary/Next Steps

Questions

Your care plan

When

Who

Where

Summary/Next Steps

Questions

Your care plan

When

Who

Where

Summary/Next Steps

Questions

Your care plan

When

Who

Where

Summary/Next Steps

Questions

Your care plan

When

Who

Where

Summary/Next Steps

Questions

Your care plan

When

Who

Where

Summary/Next Steps

Questions

Your care plan

When

Who

Where

Summary/Next Steps

Questions

Your care plan

When

Who

Where

Summary/Next Steps

Questions

Notes

Notes

Notes

Notes

Mesothelioma UK

provides specialist,
impartial, up to
date support and
information.



To sponsor or donate contact: Mesothelioma UK

CIO Registered Charity Number 1177039

Email | info@mesothelioma.uk.com

Freephone | 0800 169 2409

Website | www.mesothelioma.uk.com



This document has been produced for you in consultation with patients, clinicians and asbestos support groups.

With particular thanks to the National Lung Cancer Forum for Nurses for initial project funding, and to HASAG and MAVS for their input.

This title was previously called: My Mesothelioma Care Passport

Reviewed: Oct 2023 | **Review due:** Oct 2025 | CH-03-02

Download information from
www.mesothelioma.uk.com

To request a copy, **freephone** 0800 169 2409
or **email** info@mesothelioma.uk.com