



ISSUE 20, APRIL 2016

NLCFN Newsletter

IN THIS ISSUE...

NLCFN Annual Conference Solihull 2016 2

News and Publications

Lung Cancer Coalition E-Atlas 3

Report on improving communication with patients in the NHS 3

Second Lung Cancer Consultant Outcome Publication (LCCOP) 3

Worrying rise in smoking rates in young women 3

Report on the impact of air pollution 3

Cancer Clinical Commissioning Group Outcomes Indicator Set updated (18.02.16) 3

Mesothelioma News 4

Research News

National Lung Cancer Forum for Nurses Research Interest Group (RIG) 5

BTOG, 27-29 January 2016, Dublin 5

Research Grants 5

Research Training 5

Research Database 5

IASLC World Conference on Lung Cancer 5

Professional Development and Support

Revalidation 6

Attending BTOG 2016, Lauren Murphy shares her thoughts 7

Florence Nightingale 2016-17 Scholarships 7

BIL TORCH-Nursing Workshop 7

Information for Patients

Looking for good quality information to help support your patients with neuroendocrine tumours (NETs)? 8

Members News 8

Dates for the Diary 11

MESSAGE FROM THE NEWS CO-EDITOR

Welcome to the Spring Newsletter

Winter is over and the days are getting brighter and lighter. It's time for a spring clean and to think of how we can change and improve our ever evolving practice. This spring newsletter is packed with information and links to a variety of documents and useful websites, as well as providing feedback from BTOG. Dates of forthcoming meetings and conferences are listed and I hope as many of you as possible are able to attend IMIG, in our local soil of Birmingham, 1st to 4th May.

Do have a think what you and your teams can present at WCLC in Vienna 4th-7th December. UK nurses are always extremely well represented and the NLCFN is highly respected internationally. If you require any help, please contact us via the NLCFN website, or any of the methods shown below, with any queries and we will be happy to advise. Abstract submission deadline 30th June.

Don't forget about Revalidation. When is yours due? In this issue we feature a personal account by Carol Davies on her experience of the process with links to NMC resources and templates. Enjoy, learn and share from the process.

We in the committee hope you find this newsletter informative and educational. If there are any issues you would like us to address, or an article you would like to publish or an event to advertise, please do let us know.

Wishing you all a productive and energized year ahead.



Many thanks
Best wishes,

Lavinia Magee
Newsletter Co-Editor



The National Lung Cancer Forum for Nurses

Direct NLCFN Telephone Number: 01675 477607

Email: info@nlcfn.net

Address: NLCFN, Unit 2, Warwick House, Kingsbury Road, Curdworth, Sutton Coldfield, B76 9EE

STOP PRESS – SAVE THE DATE

NLCFN ANNUAL CONFERENCE – 10TH AND 11TH NOVEMBER 2016 *New Horizons – The changing landscape of lung cancer management*

We are delighted to announce that this year's annual conference of the National Lung Cancer forum for Nurses will take place at the St Johns Hotel, Solihull on the 10th and 11th November 2016.

Based on the patient pathway and featuring topics addressing symptom management this year's conference promises to offer a highly relevant educational programme for lung cancer and mesothelioma nurse specialists. The interactive programme will be packed with interesting and enjoyable sessions and this year we will also be featuring a debate on SABR vs Surgery and an afternoon breakout where delegates can choose sessions to attend on nurse led clinics or symptom management.

Of course, as always you can be sure of a huge and friendly welcome by the NLCFN committee and your colleagues and peers.

This year our exhibition space and dining area is more than doubled allowing delegates more space to network with colleagues and enjoy the



conference exhibition. As always there will be plenty of time for networking and enjoying yourself as well.

The St Johns Hotel is a popular conference venue and hotel in the popular shopping town of Solihull in the West Midlands, ideally located just minutes away from the M42 and close to the NEC and Birmingham International Airport. Solihull train station is just a few minutes' walk away and the improved Chiltern Line takes travellers into central London in under an hour and a half. The hotel includes plenty of parking.

Full details will be available soon. In the meantime, make sure you hold the dates for 10th and 11th November 2016.

Here are just a few comments from last year's attendees:-

I thought the NLCFN worked incredibly hard to put on a smooth and well organised conference which I look forward to attending again next year. It's a great opportunity to meet with other colleagues who I rarely see in a relaxed and informal environment. As a team it really does give us an opportunity to learn and celebrate the fantastic work we all do for our patients whilst learning about new ways to make our service better.

It is so important that we are able to meet and share information like this. It is vital information that makes a real difference to our patients. Even the smallest amount of information can change things for people.

It was great to have a patient's perspective - reminder why we all do this role and what is at the heart of it. It was reassuring that the work we do is recognised and nursing/standard of nursing is one of excellence, knowledge and expertise.

As I am new to the role of lung cancer nurse this conference has been invaluable in helping me understand my role and the impact I can have on patients.

Really enjoyed conference, good opportunity to get away from work to learn and hear about ways that I can improve my practice.

The conference provided me with many learning opportunities that I was not aware of.

Another fantastic conference, well organised, very interesting and a great dinner.

Excellent conference. Excellent speakers, thought provoking. Great opportunity for networking and time to reflect on your post and service.

REGISTER NOW...

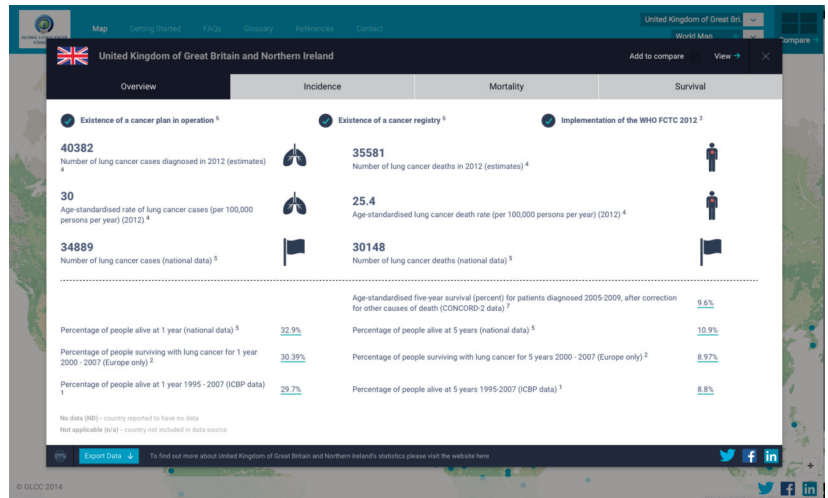
For full details about the conference including registration rates, conference programme, information on how to submit an abstract and accommodation information visit our website at

<https://www.nlcfn.org.uk/annual-conf>

NEWS AND PUBLICATIONS

Lung Cancer Coalition E-Atlas

The e-Atlas is an interactive map that allows patients with lung cancer, clinicians and policymakers to compare statistics of the disease across the world. As we know lung cancer is the biggest cancer killer in the world and there are significant variations in its incidence, mortality and survival across the globe. Developed by the Global Lung Cancer Coalition, the atlas (www.lungcancercoalition.org/atlas) brings together the latest published information about lung cancer's impact in different countries. It also details whether each country operates a cancer plan or has implemented the World Health Organisation Framework Convention on Tobacco Control and allows users of the map to compare data from up to four countries at any one time via a dashboard system.



Report on improving communication with patients in the NHS

A new report for Marie Curie in the NHS has warned that poor communication in the NHS has a profound impact on patient care, staff burnout and public funds. The report, *A Long and Winding Road: Improving Communication with Patients*, available at <https://www.mariecurie.org.uk/globalassets/media/documents/policy/campaigns/the-long-and-winding-road.pdf> argues that inadequacies in communication are damaging medical care and wasting much-needed NHS resources - and estimates that the total cost, in England alone, is likely to be in excess of £1 billion a year.

The report highlights that better communication between healthcare professionals and patients can save costs, improve health outcomes and enhance the quality of experience of patients and the professionals who support them.

Second Lung Cancer Consultant Outcome Publication (LCCOP)

A report published by the Royal College of Physicians and the Society for Cardiothoracic Surgery in Great Britain and Ireland on 8th March 2016 demonstrates that survival rates after major lung cancer surgery is improving. Dr Ian Woolhouse, senior clinical lead on the National Lung Cancer Audit said: "These results are very impressive and should serve to reassure patients that lung cancer surgery is very safe."

The National Lung Cancer Audit team is committed to working together with the Society for Cardiothoracic Surgery to increase the number of successful lung cancer operations even further, whilst maintaining the current high levels of post-operative survival."

You can download and view the report at <http://www.rcplondon.ac.uk/LCCOP2016>

Worrying rise in smoking rates in young women

The Guardian newspaper (18 Feb 2016) reported on an increase in the proportion of young women smoking. It is widely recognized that smoking rates amongst young women has been slowly declining since 2008 but the latest ONS data shows that rates increased year-on-year by 1 percent in 2015 to 21 percent of 16-34 year old women. The same data indicates that the rate rise was steepest among women aged between 25 and 34, where the proportion rose from 20.4 per cent to 21.8 per cent.

Report on the impact of air pollution

The Royal College of Physicians has published a new report, *Every breath we take: the lifelong impact of air pollution* sets out the dangerous impact air pollution is currently having on health, highlighting the role of air pollution on public health and its impact on our health service and the high costs to people and business. You can access the report at <https://www.rcplondon.ac.uk/projects/outputs/every-breath-we-take-lifelong-impact-air-pollution>

Cancer Clinical Commissioning Group Outcomes Indicator Set updated (18.02.16)

- A number of Clinical Commissioning Group Outcome Indicator sets have been updated. Of particular interest is Indicator CCG06: *The proportion of lung cancer cases for which a stage at diagnosis is recorded*
 - Measured as:
 - o **Numerator:** The number in the denominator who have a stage of diagnosis recorded, as defined by United Kingdom and Ireland Association of Cancer Registries (UKIACR) registration rules
 - o **Denominator:** The number of patients first seen in the respective Lung Cancer Audit year

The updated documents can be accessed at <http://www.nice.org.uk/standards-and-indicators/ccgoisindicators?do-main=&subjects=11899>

MESOTHELIOMA NEWS



MESOTHELIOMA UK
CHARITABLE TRUST - 1126083
Supporting People With This Asbestos Cancer

Helpline: 0800 169 2409

Website: www.mesothelioma.uk.com

The Charity continues to go from strength to strength all thanks to our amazing fundraisers and a wonderfully enthusiastic and committed team. We are grateful to UK organisations such as the NLCFN for continuing to embrace the charity and supporting us.

Much of our focus over the last few months has been preparing for IMIG2016 (www.imig2016.org). The main meeting program starts on Monday May 2nd but Meso UK and the NLCFN have joined forces to provide a nurse meeting on Sunday May 1st. Kicking off at 12.30, in the Hyatt Hotel adjacent to the ICC, the presentations start at 1pm and go through until 5.30 finishing in time for the IMIG opening reception. We break mid-afternoon for a very British Afternoon Tea and I am delighted to report that we are nearly at maximum capacity (80 persons) for the event. Registrations for IMIG are currently at 450 delegates covering many countries and disciplines and over 300 abstracts have been accepted. On Tuesday May 3rd Meso UK are hosting a parallel meeting for patients and carers also in the Hyatt hotel. This event is free to patients and carers and will make use of having on hand world leaders in the field. Please come and support IMIG 2016, it's not often we get to host such a prestigious event, we have negotiated hard to keep the cost down for nurses and we Brits really do 'set the height of the bar' but then I am biased!

The number of Meso UK CNS post holder is increasing. We recently awarded funds to centres in Wales, Yorkshire, Cornwall, Cambridgeshire and Leicester to recruit Meso UK CNS's 8, 9, 10, 11 and 12. We shortly hope to announce funds available for nurse 12+1 too (Don't want to say the unlucky number!).

The charity is currently negotiating with the Royal College of Physicians team, who manage the National Lung Cancer Audit, a way forward for maintaining and developing national mesothelioma data. Previous data collection, analysis and reports have been included in the NLCA program but this ceased with the new contract. A national data initiative for every cancer is not possible, only the main high incidence cancers

are prioritised. Fortunately Meso has always been included in LUCADA now the NLCA so we have many years of data and previous reports to work from. Seeing the contribution the NLCA has made to service improvement and equity in access to care reassures Meso UK that providing support for the development of a National Meso Audit is a good use of resources.

We are pleased to report that the Basingstoke based peritoneal surgical team have launched a National Peritoneal Mesothelioma Multi-disciplinary (Virtual) Team Meeting. Held on the first Tuesday of each month the team is happy to review any cases referred and centres can join the discussion through video/teleconferencing. We hope to keep you informed of the team's progress through our newsletter and social networking sites. For more information please contact via email bnh-ft.PeritonealNMDT.nhs.net.

Finally the big news is the £5m fund announced in the recent budget that has been given to establish a National Mesothelioma Centre of Excellence. Details are currently not clear but we understand Imperial College are going to lead the project and as soon as we hear how, when, who and where we will keep you informed. The announcement has taken many by surprise, it is excellent news; investment is vital if we are to address the many needs and challenges Mesothelioma poses.

Please do not hesitate to contact Mesothelioma UK if there is something you think could help us improve our services or reach more people. We really value your expertise, you are on the front line helping patients and their families every day and we are committed to helping you in any way we can.

Happy spring everyone.

Liz Darlison
April 2nd 2016



iMig 2016

Towards Personalized Care

13th Annual Conference of the International Mesothelioma Interest Group

Visit <http://imig2016.org/> for more information

RESEARCH NEWS

National Lung Cancer Forum for Nurses Research Interest Group (RIG)

The National Lung Cancer Forum for Nurses (NLCFN) is keen to develop research and evaluation activity to help improve care and services within lung cancer. With this goal in mind the NLCFN established a Research Interest Group (RIG) in 2010. This RIG aims to facilitate collaboration and dialogue between clinical and academic colleagues and bring together experienced researchers and nurse specialists with a declared interest in lung cancer and research.

New members welcome!!!!

Any Forum member is welcome to attend or be on the circulation list for the RIG. It doesn't matter whether people are research active or not. We will welcome input and ideas from any Forum member. If you would like to join the RIG or would like more information please contact info@nlcfn.net.

BTOG, 27-29 January 2016, Dublin

Nursing Workshop

The BTOG conference this year provided a fascinating programme of presentations and workshops. Smoking cessation was a topic that reoccurred throughout. It was also the focus for the nursing workshop this year. We had two speakers followed by a discussion of the roles and responsibilities of the LCNS in smoking cessation.

Sanjay Agawal, a Consultant Respiratory Intensivist from University Hospitals Leicester NHS Trust gave an overview of the evidence on smoking cessation. He also gave an excellent and informative update E Cigs and a summary of the pros and cons.

Peter MacKereth, the Clinical Lead for Complementary Health & Wellbeing Services at The Christie NHS Foundation Trust presented his own work in this area and built on Sanjay's session. He discussed how the LCNS can integrate smoking cessation into practice, but also the responsibilities of the whole MDT.

Both presenters recommended raising the profile and importance of smoking cessation as one of the suite of interventions offered to

patients with lung cancer. It was suggested smoking cessation should be considered another treatment intervention, when appropriate.

Can the LCNS have an impact on cancer outcomes?

Angela Tod gave a presentation on whether the LCNS can have an impact on cancer outcomes. Angela highlighted some of the challenges and opportunities for the LCNS at the moment but also emphasised the ability of the LCNS to have a positive impact on patient outcomes. The need to focus activity and work within the constraints of current resources was highlighted.

Angela's slides are available on <https://www.nlcfn.org.uk/can-lung-cancer-cns-improve-cancer-outcomes-0>

Poster Prize

We would like to congratulate Lavinia Magee and the team on the "Using Your Voice" project, which was shown as a poster at BTOG. The team won a runner up poster prize. It is excellent to get recognition for their great work.

Research Grants

We are currently waiting for the final applications for the small grants scheme run by the NLCFN. We should be in a position to announce the successful applicant by May 2016. Further information about both schemes is available on the NLCFN website. <http://www.nlcfn.org.uk/RIG>

Research Training

BIL Torch for Nursing Research Workshop. Over the last year the NLCFN RIG has been working with Boehringer Ingelheim Ltd (BIL) to develop a training workshop for Nurses. NLCFN members will have priority for places on the workshop. It aims to increase the confidence and skills of nurses working in lung cancer regarding research. BIL TORCH for Nurses will provide an introduction to identifying, justifying, shaping and communicating a research question and help you to develop a greater understanding of what it means to be part of research activity. The workshop will be held on 22nd and 23rd April 2016 in Birmingham.

For more details see: <http://www.nlcfn.org.uk/torch-programme-0>

We will feedback on the TORCH for Nursing Work in the next newsletter.

Research Database

Over the next year the NLCFN RIG will be setting up a database. This will detail research projects and outputs that the RIG is currently involved in. Do let us know of any research projects that should be added to the database. Please contact info@nlcfn.net for instructions on how to submit your research project work.

IASLC World Conference on Lung Cancer, Vienna, 4-7 December 2016

Last year the International Association of the Study of Lung Cancer took place in Denver, USA. The NLCFN aims to maintain the impact and presence they had at the previous IASLC conferences and encourages Forum members to start planning now for IASLC 2016. The next IASLC conference will be held on 4-7 December in Vienna.

Online registration opens: JANUARY 20, 2016

Abstract submission opens: JANUARY 20, 2016

Abstract submission deadline: JUNE 30, 2016

Author notifications: SEPTEMBER 14, 2016

Early registration: SEPTEMBER 23, 2016

Late-breaking abstract: SEPTEMBER 30, 2016

Submission deadline for regular registration: OCTOBER 21, 2016

Good luck to all of you who submit an abstract. Please let the Forum know if you are successful.

Attending the British Thoracic Oncology Group Meeting, Dublin, 2016, Lauren Murphy shares her thoughts...

I am currently on a secondment as a lung cancer clinical nurse specialist at The Christie NHS Foundation Trust. So far this has given me many opportunities – one being attending my first BTOG conference this year.

The conference provided me with an update of the management of lung cancer and mesothelioma and also improved my understanding on the nature of the clinical practice and research facilitated network. It also gave me the opportunity to meet and network with other lung cancer nurse specialists from around the country.

I attended various talks during the three days and felt there was a great mix of topics. However, of particular interest was the symposium by Dr Sanjay Agrawal discussing the latest evidence on smoking cessation and e-cigarettes

as this is relevant to my daily practice. Also, the talk by Professor Angela Tod “Can the lung CNS improve cancer outcomes?” was of great interest as this was especially relevant to my role as we are currently trying to demonstrate the positive impact of the lung CNS for patients in our trust in order to create an additional post.

There were almost 200 posters submitted this year and it was very interesting and inspiring to walk around them and to see the research that is being carried out around the country. It was nice to see that the focus was not solely on the medicine of lung cancer but there were many focused on the patient experience.

I greatly enjoyed my first BTOG experience and would recommend it to any nurses working in thoracic oncology. Attending BTOG for

the first time was both an educational and inspiring experience and a reminder that there is hope for the future!

“Going to BTOG reminds you there is hope for the future. There were numerous passionate doctors and specialist lung nurses there who, yes will enjoy the dinner and let their hair down but they’re there for a much more important reason. They’re there to discuss advances in medicine, to discuss research, to share ideas and to try to find ways to help those suffering with both lung cancer and mesothelioma both today and in the future.”

Lauren Murphy
Lung Cancer Nurse Specialist, The Christie NHS Foundation Trust, Manchester

Florence Nightingale 2016–17 Scholarships

The Florence Nightingale Foundation raises funds to provide scholarships for nurses, midwives and health visitors, to enable them to extend knowledge and skills, and to promote innovation in practice. The scholarships provide an opportunity for nurses to advance the role of nursing, support their own career, and contribute to the improvement of care of patients and users in the UK.

The Foundation is open to applications in all areas of care but in 2016/17 is particularly interested in supporting scholarships in each of our categories looking at the following 4 key areas:

- Long term conditions (including dementia) across the whole care pathway
- End of life care
- Projects that improve the patient/user experience, enhance dignity, health or wellbeing across the whole life course
- Enhancing clinical leadership

A number of scholarships are available including:-

- Leadership Scholarships of up to £15,000 to support those who want to become leaders with the skills and self-confidence to contribute positively to the rapidly changing world of healthcare.
- Research Scholarships of up to £5,000 are available for scholars to undertake a course in research methods, research modules or a dissertation/thesis as part of an academic course of study. All of these must be able to demonstrate impact on patient care and be academically supervised or supported.
- Travel Scholarships of up to £5,000 are a real opportunity to study practice elsewhere in the UK and/or overseas to enhance patient/user care in the UK. These scholarships are awarded for projects connected with the applicant’s field of work and which will benefit their patients/users and the professions more widely.

For further information about the scholarships visit <http://www.florence-nightingale-foundation.org.uk/content/page/33/>

Are you a nurse working with lung cancer patients who is interested in developing your research skills and knowledge?

BIL TORCH-Nursing is a unique 2 day residential workshop for nurses interested in increasing their skills, knowledge and confidence in clinical research related to lung cancer. Run by experts in health and nursing research and sponsored by Boehringer Ingelheim Ltd (BIL) the workshop will:

- provide an introduction to identifying, justifying, shaping and communicating a research question
- explore why research is important at a personal and organisational level
- help you to develop a greater understanding of what it means to be part of a research community
- increase your understanding of developing your personal networks

The workshop is designed to be highly interactive. It will help you develop your research knowledge and ideas in a stimulating and supportive environment. The workshop includes formal lectures from leading experts in Nurse led research, interactive sessions, as well as dedicated time for you to spend working in small groups with faculty members.

BIL TORCH-Nursing workshop is a starting point. The longer term aim is to build a community of research interested and active clinical nurses, supported by the mentorship and expertise of nursing and health services research academics.

**The BIL TORCH-Nursing Workshop,
22nd and 23rd April 2016, Birmingham**

If you are interested in attending please contact:
Nova Sarkar oncology.bra@boehringer-ingelheim.com

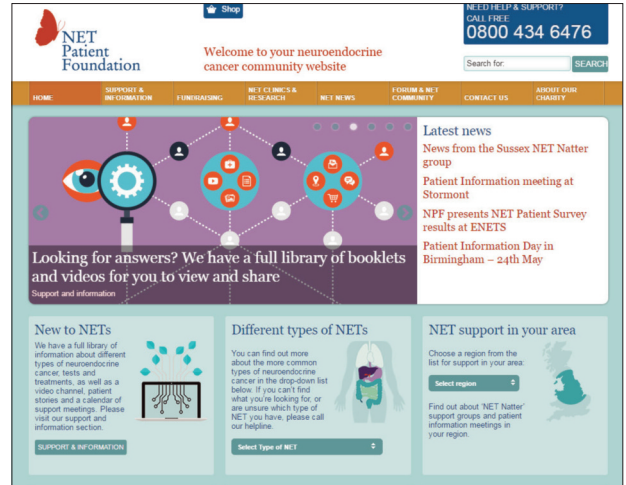
INFORMATION FOR PATIENTS

Looking for good quality information to help support your patients with neuroendocrine tumours (NETs)?

The NET Patient Foundation is a charity in the UK and Ireland dedicated to providing support and information to people affected by neuroendocrine cancers.

The NET Patient Foundation incorporating Living with Carcinoid has been working since 2006, with the following aims:

1. To provide accurate and up-to-date information for people living with, or affected by, neuroendocrine tumours. We do this through information and forums provided on this website (and links to other sources of information on the web).
2. To provide support for patients and others affected by neuroendocrine tumours. We offer a support line which is manned by an experienced healthcare professional; and organise patient support groups around the UK and Ireland.
3. To improve the quality of life for patients and their families. We can do this by providing support and information about treatments available, as well as by funding and publicising research and existing medical initiatives.
4. To raise funds, which will help to support research and diagnosis initiatives around the UK.
5. To raise awareness of neuroendocrine tumours throughout the UK and Ireland, and also within the medical community.



They produce a range of good quality information booklets and factsheets and are happy to send information out to you free of charge. Their website houses a range of information from video's to an interactive map highlighting local support groups. They also have an interactive forum as well as a news page. We hope to set up a link on the website for patients and also as an information source for the LCNS.

To find out more visit <http://www.netpatientfoundation.org>

Diana Borthwick
Chair, NLCFN Committee, Edinburgh

MEMBERS NEWS NEWS NEWS NEWS NEWS

Thoracic Surgical Group TSG

The last meeting was held on 11 January 2016 at Irwin Mitchell Office, Birmingham. There was a small attendance by TSG members, but none the less this proactive, dynamic team continued discussion around smoking cessation within the thoracic surgical population. A document is being compiled to support health care professionals in provision/access to smoking cessation for people undergoing thoracic surgery.

Any TSG members unable to attend meetings are welcome to participate in the various work the group take forward. If any TSG members are interested in participating in smoking cessation document please contact Sandra.dixon3@nhs.net

Updates from TSG members include Maureen King and her colleague at Papworth who are investigating readmission rates post thoracic surgery. Amy Kerr and her colleagues at Heartlands have developed an APP designed for patients unable to attend pulmonary rehabilitation. All of the work produced by TSG have been accepted for presentation both nationally and internationally, a testament to the enthusiasm and application of the group.

New members are welcome to join us. For further information please contact vanessa.beattie@aintree.nhs.uk

Next meeting planned for Friday 8th April. Thanks to Irwin Mitchell for their continued support in providing a venue, refreshments and travel reimbursements.

Vanessa Beattie, Aintree University Hospital NHS Foundation Trust, Fazakerley

Annual Workshop

The 13th Annual NLCFN Workshop will take place from Monday evening 16th May through to Tuesday 17th May 2016 at the Radisson Blu Hotel in Birmingham city centre. The cost of the workshop, accommodation and meals are being generously sponsored by Lilly Oncology. Standard class travel expenses up to a maximum of £100 will be reimbursed by the NLCFN. Participants who commit to the chosen project are required to be involved in ad hoc telephone conferencing and a follow up meeting in September/October 2016.

All the past projects have helped to improve the outcomes and experience of care for patients with Lung Cancer and Mesothelioma as well as helping to secure the Lung CNS role. The topic for this year's workshop has already been allocated based on previous feedback and will focus on a follow up to the 2013 project which was an audit on the 'Impact of Lung CNS on reducing A&E attendances.'

Vanessa Beattie
Aintree University Hospital
NHS Foundation Trust, Fazakerley

British Thoracic Surgical Group BTOG

It is reported that BTOG is now close to becoming charitable status. Helena Stanley has joined the BTOG committee to replace Naomi Horne.

BTOG 2016 conference (27th-29th January) was a great success. Registrations increasing year on year with just under 800 people registered for this year's event. The programme is always tightly packed with relevant areas of discussion and high quality presenters.

The satellite symposiums were well paced and interactive running from 3-7.45pm with a considerably large audience throughout. It is always good to see a nursing representation at BTOG, along with delegates, Karen Peplow (Manchester) was selected for the poster oral presentation session 'The identification and appreciation of the specific needs of lung cancer patients receiving surgery and adjuvant chemotherapy'. Karen along with her colleague Julie Watts created

much interest from the audience, with delegates queuing to ask questions.

I was also delighted to see that Karen and Lavinia Magee were presented with awards at the Gala dinner in respect of their poster submissions.

BTOG committee next meet Wednesday 20th April.

Vanessa Beattie
Aintree University Hospital
NHS Foundation Trust,
Fazakerley

IASLC Nursing and Allied Health Care Professionals Group

The remit of the IASLC Nursing and AHP committee is to address the educational and related needs of nurses and AHP's within IASLC by:

- developing programs that will promote attendance of nurses and AHPs at WLCC and other IASLC meetings
- establishing and expanding relationships with professional associations involved with nursing and AHPs. This will add to the strength of the group and bring expertise from all over the world. With this in mind I was asked as Chair of the NLCFN to join the group as was Melissa Culligan from ITONF and Mary Duffy from the Australia and NZ nurses group
- utilizing and promoting existing research activity and networks within nursing and AHP
- Developing a communication strategy

John White has just taken over as the Chair of this group with Anne Fraser from NZ as vice chair. There are currently 4 sub-groups:

- Research – Lead is John White. Looking to develop a strategy
- Education – Lead is Anne Fraser. Plans include developing a survey to identify IASLC nurse members requirements. They plan to look at online resources available for global education, particularly for those with income developing countries and accessibility issues, etc. They are also keen to consider translations and include resources to make these available in other languages since the need is so great in those countries/regions
- Membership – Lead is Liz Darlison. This group plans to develop in more regions outside of English speaking which may also help increase membership
- Conference – Lead is John White. Plans to address how to establish nursing/AHPs on WCLC program planning committee to enable joint symposium's and promote specific nursing and AHP sessions

Diana Borthwick, Chair NLCFN

The NLCFN goes to Westminster. Spot your MP!!!!

On Tuesday the 17th November the Roy Castle Lung Cancer Foundation organised a Meet and Greet the MPs event in the House of Commons, Westminster. The event was strategically staged in the middle of lung cancer awareness month to raise the profile of lung cancer.



Committee members Diana Borthwick, Rachel Thomas and Lesley Holland attended together with colleagues from the RCLCF. It was a great opportunity to meet with MPs to raise awareness of some key messages including, the need to capture earlier diagnosis, the poor funding there is for lung cancer research, and the need to invest more into research to improve outcomes for patients.

The MPs who attended included:

First Name	Surname	Constituency
Sir Kevin	Barron	Rother Valley
Alex	Cunningham	Stockton North
James	Davies	Vale of Clwyd
Mark	Durkan	Foyle
Karen	Lumley	Redditch
Liz	McInnes	Heywood and Middleton
Greg	Mulholland	Leeds North West
Toby	Perkins	Chesterfield
Margaret	Ritchie	South Down
Jim	Shannon	Strangford
Virendra	Sharma	Ealing Central
Stephen	Twigg	Liverpool West Derby
Derek	Thomas	St Ives
Jason	McCartney	Colne Valley

This was also another opportunity to raise the profile of the Lung cancer specialist nurse. These events do happen occasionally and often in November (Lung cancer awareness month). If you have an opportunity to attend in the future, it is a fantastic opportunity, great for networking and raising awareness.

Lesley Holland
Kettering Hospital

Your committee – Committee Member Profile



Karen Clayton
*Macmillan Lung/Palliative CNS,
 East Cheshire NHS Trust*

I was appointed Macmillan Lung/Palliative CNS in April 2010, prior to this my career was mainly in the acute sector. I worked on medical wards, ICU/HDU as well as being an A&E Sister for six years and Medical

Nurse Practitioner for three. I trained at Stepping Hill hospital and Manchester University before moving to Macclesfield District General. I attained my Masters of Arts in Advanced Nursing Practice from John Moores University in 2012 and became a Non Medical Prescriber in 2013.

I have been a member of the NLCFN since appointment. The forum has been instrumental in supporting my development. I have attended two Lilly workshops, leading one. This led to being able to present at the World Conference for Lung Cancer in Denver 2016. I have also presented at NLCFN conference these experiences have built my confidence and understanding of lung cancer care. I am now Lead Lung CNS at East Cheshire, leading a team who support patients from pre diagnosis to end of life in primary and secondary care.

Apart from being a Lung CNS I am a wife and mother of three, Twin girls (21) and a son (12) they are very grounding. I have been a Manchester City fan since 1978 (don't hold it against me) and enjoy attending matches with the family who are all season tickets holders. I also enjoy family holidays and live music concerts.

I feel honored and privileged in becoming a committee member and look forward to the challenge of ensuring the NLCFN goes from strength to strength for the members and our patients.



Helena Stanley
*Mesothelioma UK/Macmillan Lung
 Cancer Nurse Specialist, Sheffield*

I am a Macmillan Lung Cancer Nurse Specialist at Sheffield Teaching Hospitals NHS Trust, where I have worked since 2004. In 2014 I became the Mesothelioma UK sponsored Nurse Specialist covering the

South Yorkshire and North Derbyshire region. I qualified as a nurse and worked in Birmingham for many years, mainly in the oncology units at the QE and Selly Oak Hospitals. During this time I gained a good grounding in many aspect of cancer nursing, and became aware that lung cancer patients lacked the support they needed. Because of this, I became a Roy Castle funded Lung Cancer CNS in Birmingham. This was 1999, when many Lung cancer CNS's were first appointed, making me one of the first wave of lung cancer CNS's. For this reason, I have always felt very close to the NLCFN, as I was there as a member from the beginning. After a time working in the British Columbia Cancer Agency in Vancouver, I came to Sheffield to continue my role as a Lung Cancer CNS.

In my role as a Mesothelioma CNS, I have taken the national lead for peritoneal mesothelioma as well as having other local and regional responsibilities.

I am passionate about raising awareness of lung cancer and mesothelioma and the issues surrounding it. I work closely with local asbestos support groups, and help to run a local mesothelioma support group with them. Through my roles, I hope to promote excellence in care and equity of access to treatment for all patients and their carers.

I am a member of both the International and National Lung Cancer Forum for Nurses, the British Thoracic Oncology Group, the International Association for the Study of Lung Cancer and the United Kingdom Oncology Nurses Forum. I feel that it is important to represent UK Nursing within these forums, and would encourage you all to do so as well.

I am also a member of the Macmillan expert reference group exploring older people with cancer, and exercise which will produce national guidelines in the next two years.

Representing the membership of the NLCFN on the Committee is a real privilege, and I hope that I can bring a wealth of experience and a pragmatic approach to help the Forum. I am keen to engage the membership in guiding our activities, so would welcome any feedback or suggestions as to how we can achieve this.

In my spare time I am a keen Stoke City Football fan, and I am a qualified boxing coach. I love sport and am pretty active, a lot of my spare time is taken up by going to the gym, swimming, cycling, running and walking. Last year I took part in my first short triathlon, and will do it again this year.

DATES FOR THE DIARY



**1st-4th May
2016**

**International Mesothelioma
Group**

Birmingham
<http://imig2016.org/>

**16th/17th May
2016**

NLCFN Annual Workshop

Birmingham, Venue tbc.
This meeting is fully subscribed

**29th May -
1st June
2016**

**24th European Conference
on General Thoracic Surgery**

Naples, Italy
<http://2016.estsmmeetings.org/>

16 June 2016

**Advances in Thoracic
Oncology Study Day**

12.30–17.00, Grand Connaught Rooms,
61-65 Great Queen St. London, WC2 5DA
*To register or for more information please
email maddison.peters@irwinmitchell.com*

**4th-7th
September
2016**

**International Conference on
Cancer Nursing (ICCN 2016)**

Hong Kong, China
<http://www.isncc.org/?page=ICCN2016>

**17th-18th
October 2016**

Using Your Voice Workshop

Birmingham

**10th-11th
November
2016**

NLCFN Annual Conference

St Johns Hotel, Solihull
<https://www.nlcfn.org.uk/2016-annual-conference>

**4th-7th
December
2016**

**World Conference on Lung
Cancer**

Vienna, Austria
<https://www.iaslc.org/events/17th-world-conference-lung-cancer>

**25th-27th
January 2017**

BTOG 2017 Conference

Dublin
*Abstract submission opens 1st August &
closes 1st October 2016*
<http://www.btog.org/annual-conference.htm>



National Lung Cancer Forum for Nurses

Address: Unit 2, Warwick House, Kingsbury Road, Curdworth, Warwicks, B76 9EE

Telephone: 01675 477607 Website: <http://www.nlcfn.org.uk> Email: info@nlcfn.net

The National Lung Cancer Forum for Nurses is grateful to its corporate sponsor Lilly Oncology for the provision of an educational grant to support the activities of the organisation. Lilly Oncology have had no input to the production of this newsletter. Click <http://www.nlcfn.org.uk/content/sponsorship-opportunities> for the NLCFN information on sponsorship including our statement on funding